

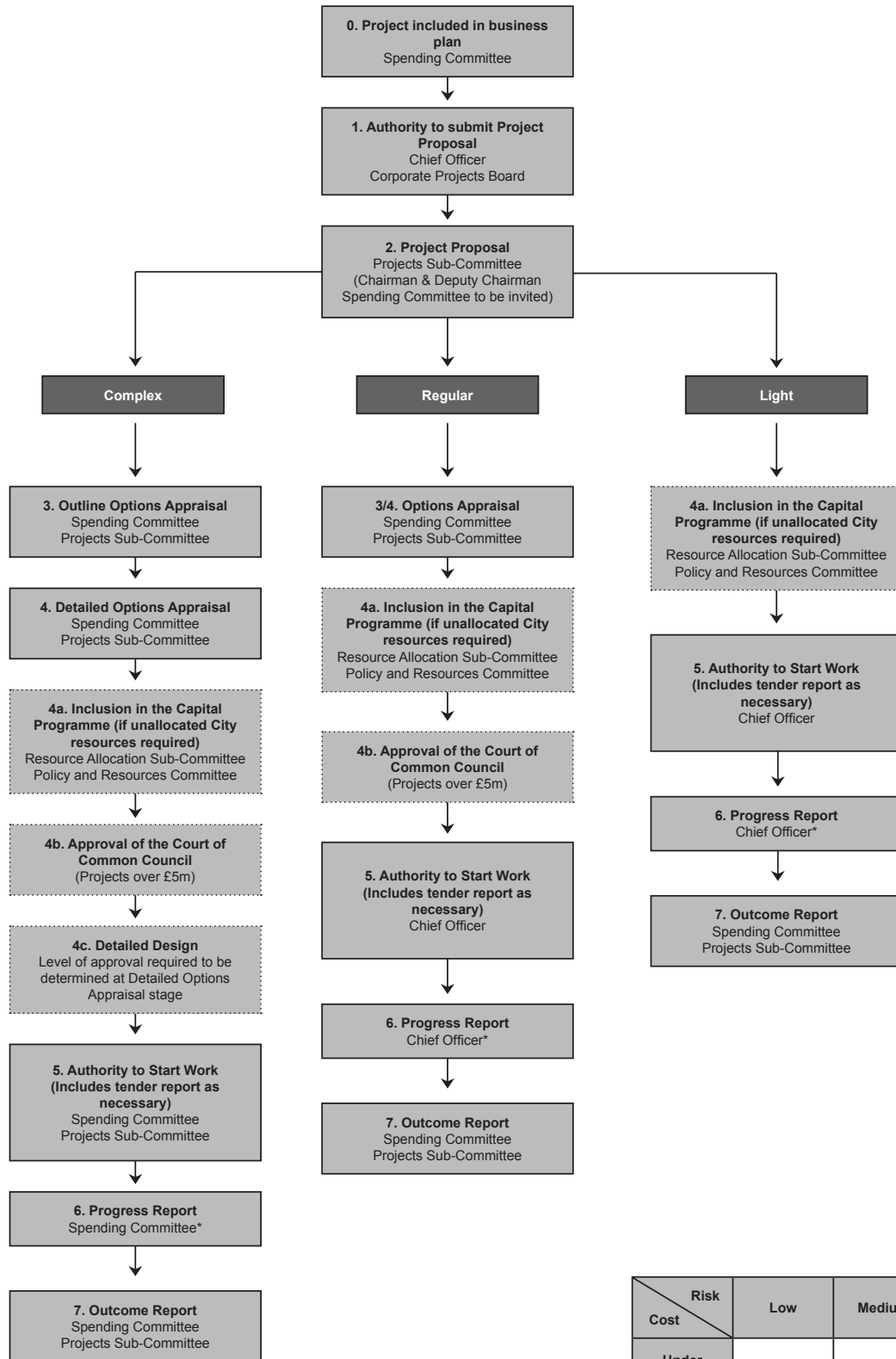
Gateway Approval Process

The procedure applies to projects that result in tangible, physical deliverables (including IS projects) in the following categories.

Capital and Supplementary Revenue projects (including those within agreed strategies) >£50k

Routine Revenue projects >£250k

Capital and Supplementary Revenue projects delivered with ringfenced funds >£250k



* Projects Sub Committee regularly reviews the whole programme of projects

Risk \ Cost	Low	Medium	High
	Under £250k	£250k - £5m	Over £5m
Under £250k	Light	Light	Regular
£250k - £5m	Regular	Regular	Complex
Over £5m	Regular	Complex	Complex